

# e-TRIGGER USER GUIDE

## Specifications

**Model:** E-TRIGGER.

**Frequency:** 433.39 MHz.

**On Board Power supply:** 3V CR2045 battery (not supplied)

**External battery input:** 10-36VDC.

**Input protection:** Opto isolator.

**Wire input hole diameter:** 4.4mm to 6mm.

### Safety instructions

Before proceeding with the product's installation, check that all the materials are in good working order and suited to the intended applications. Danger due to electric power. Contact with live parts may result in an electric current flowing through the body. Electric shock, burns, or death may result. Installation must be done by an authorized specialist.

### STEP 1:

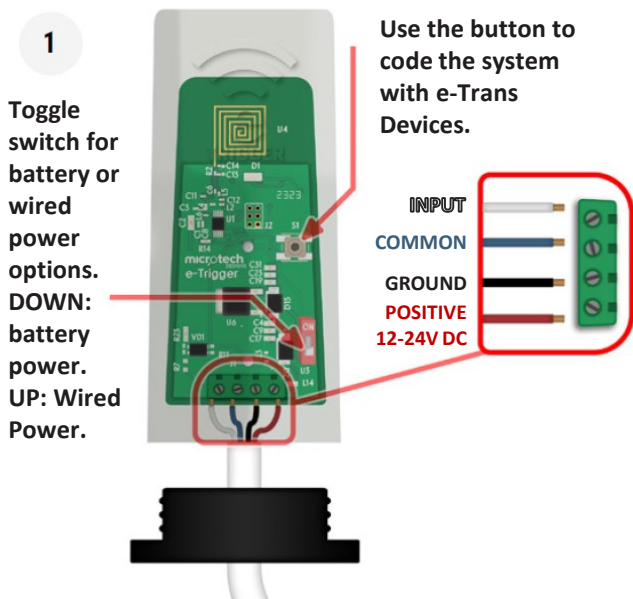
1. Wire the e-Trigger into the output relay of the third-party device using the COM and INPUT terminals on the e-Trigger. Now either fit a 3V CR2045 battery (not supplied) or wire into the DC power supply from the third-party device. Ensure you don't fit battery when using the power supply from another source.
2. Battery switch should be OFF for use with battery and ON for use with 12-24VDC external supply.

### STEP 2:

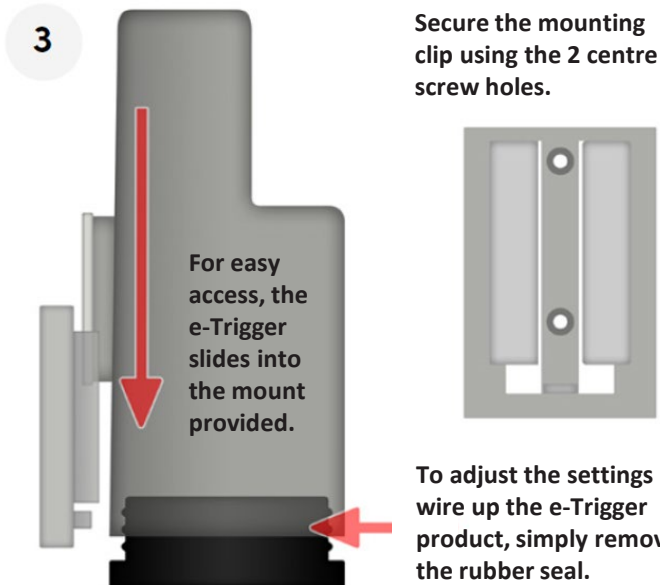
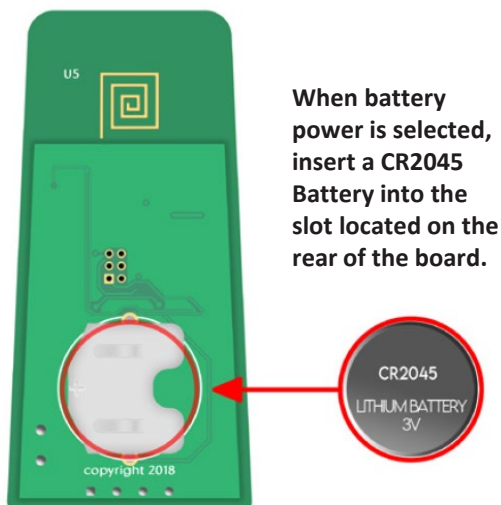
Code the e-Trigger into the e-Trans transceiver following the instructions on the next page.

### STEP 3:

Fit the post bracket and slide the e-Trigger into position.



**NOTE:** When using wired power ensure the battery is removed.



## Programming the e-Trigger into the e-Trans 50 and 200 version 2.0

### E-TRANS 50:

1. Press the Code button on the e-Trans 50 and release, now press the Code button on the e-Trigger once, the Blue LED will flash on the e-Trans 50, now press Code again to confirm.
2. Follow on with another device or press Code again to exit Code Learn.

### E-TRANS 200:

1. Rotate the rotary switch until you see 'Code Device', now press down on the rotary switch to enter coding and the screen will show 'Code Learn'.
2. Now press the Code button on the e-Trigger and release, the screen will show the remote number.
3. Press the Code button on the e-Trigger again and the screen will show 'Remote Confirm'. Follow on with another device or press Code again to exit Code Learn.

## Programming the e-Trigger into e-Trans 50 and e-Trans 100 version 3.0

### One Press Coding

1. Press the Code button on the e-Trans 50 and release, now press the Code button on the e-Trigger once and the Blue LED will flash on the e-Trans 50, indicating coding sequence is complete. Follow on with another device or just press Code again to exit Code Learn.'.
2. Press Code button 1 or Code button 2 on the e-Trans 100 and release, now press the Code button on the e-Trigger once and the Blue LED will flash on the e-Trans 100 indicating coding sequence is complete. Follow on with another device or press Code again to exit code learn.

NOTE: Code Learn will exit after 5 seconds if no remotes are received.

Disposal: The packaging must be disposed of in the local recyclable containers. According to the European Directive 2002/96/EC on waste electrical equipment, this device must be properly disposed of, after usage in order to ensure a recycling of the materials used. Old accumulators and batteries may not be disposed of in the household waste, since they contain pollutants and must be properly disposed of in municipal collection points or in the containers of the dealer provided. Country-specific regulations must be observed.

## Programming the e-Trigger into e-Trans 200-300 or e-Gate controller version 3.0

### One Press Coding

1. Rotate the rotary switch until you see Code Device, now press down on the rotary switch to enter coding sequence, the screen will show 'Code Learn'.
2. Now press the Code button on the e-Trigger and release, the screen will show 'Remote Coded'. Follow on with another device or press Code again to exit Code Learn.



Document updated: 30/08/2023



AES Global Ltd - 4 Kilcronagh Business Park, Cookstown, BT80 9HJ, UK.  
Product Type: Wireless Vehicle Detection & Automation.

Hereby, AES GLOBAL LTD declares that the radio equipment type e-LOOP Mini is in compliance with Directive 2014/53/EU. The full text of the EU Declaration of Conformity is available at the following internet address: [www.aesglobalonline.com/e-loop#ce](http://www.aesglobalonline.com/e-loop#ce)



Points de collecte sur [www.quefairemedesdechets.fr](http://www.quefairemedesdechets.fr)

