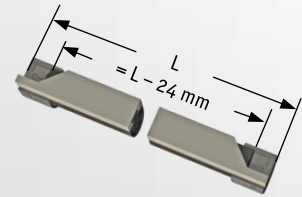


Assembly instructions

Safety contact edges may only be assembled and installed by authorized personnel!

1. Cutting the safety-contact-edge

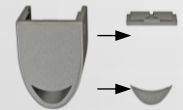
The safety-contact-edge is cut 24 mm shorter than the final length dimension to allow for the length of the end caps on each end. Make sure that the edge is cut clean and straight.



2. Preparing end caps

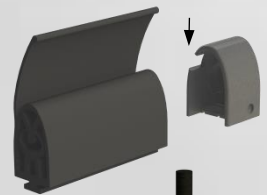
a) Water drain plugs

For installations in contact with water, it is necessary to remove water drain plugs. If the edge is to be mounted horizontally, remove drain plugs from both ends. If the edge is mounted vertically, just remove the lower drain plug.



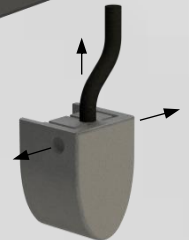
b) Notch for the sealing lip

When assembling safety-contact-edges with weather-sealing lips, the end caps have to be notched where indicated to allow for the weather-sealing lip(s).

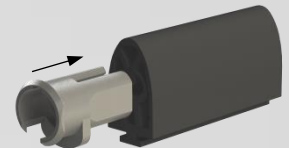


c) Connection cable

Choose desired cable exit of end cap. If necessary, stitch through the marks.

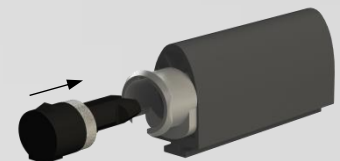


3. Insert lock cap - Push in the lock cap with the bar down into the hollow spaces surrounding the switching chamber and push it tight to the cut surface of the safety contact edge.



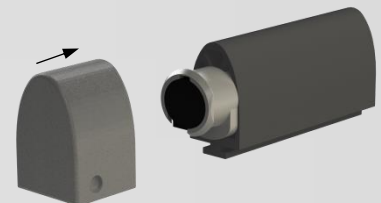
4. Insert the contact plug

Insert the plug into the electrical switching chamber of the safety-contact-edge. Make sure that the plug is pressed in tightly until the upper notch of the plug disappears into the slot of the lock cap.



5. Put on end caps

Put on end cap onto the safety edge and fasten it by pushing end cap onto lock cap until both are noticeably combined. The end cap shall surround the edge smoothly and may not be removable easily.



6. Electrical testing of the safety contact edge

Measure the contact edge with a multimeter. In rest position, the resistance value has to be $8,2 \text{ k}\Omega \pm 500 \Omega$. When edge is activated, the resistance should not exceed 500Ω .



7. Cutting mounting rail

The aluminum mounting rail has to be as long as the final dimension of the contact edge.