



# Tomalok

## The Electric Gate Bolt

The Tomolok combines robust engineering and state of the art innovation. With a sleek design, the electric drop bolt seamlessly integrates into your gate system, offering a discreet yet powerful safeguard.

**Lifting force 30N.**

**Overcurrent trip:** Auto stop on ground or limit detection via overcurrent sensing technology.

**Current:**

Standby 140mA.  
Peak Draw 280mA.  
Operation 210mA.

**Battery backup time:**

Rechargeable lithium battery provides up to 4 days of standby and 10-20 operations.

**Trigger method:** No relay needed between gate controller and lock. Connect direct to either flashing beacon output, or courtesy light output.

**Manual override:** yes.

**Pin:** 150mm Stroke - 20mm diameter stainless steel pin.

**Stainless steel:** Marine grade Stainless steel BS316 (Black & Grey units are both powder coated).

**Power:** 24v dc.

**Power cable:** 4 core 5 metres included.

**Power supply type:** Power directly from gate operator (300mA) or from optional power supply.

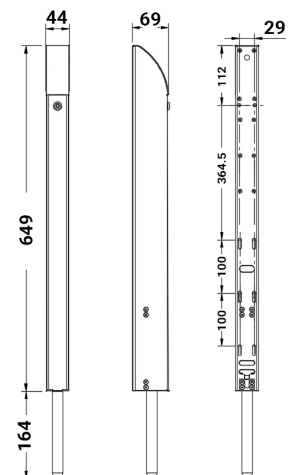
**Ground keeper:** optional 2 types (with / without gate stop).

**Mounting method:** M4 jack nuts (included).

**Min recommended gate profile:** 50mm box.

**Unit weight:** 4.5kg.

**Accessories included:** Power supply, protective flexi cable, jack nut fixing tool, keys.



## Gate bolt & power supply kits.



### TL-S-150-K

Tomalok Electric Drop Bolt in Stainless. 150mm with 24v Din Rail Power Supply.



### TL-B-150-K

Tomalok Electric Drop Bolt in Black - 150mm with 24v Din Rail Power Supply.



### TL-SB-150-K

Tomalok Electric Drop Bolt in Black and Stainless - 150mm with 24v Din Rail Power Supply.



### TL-A-150-K

Tomalok Electric Drop Bolt in Anthracite Grey - 150mm with 24v Din Rail Power Supply.

## Gate bolt, ground stop & power supply kits.



### TL-S-150-KIT

Tomalok Electric Drop Bolt in Stainless - 150mm with 24v Din Rail Power Supply and Ground Stop.



### TL-B-150-KIT

Tomalok Electric Drop Bolt in Black - 150mm with 24v Din Rail Power Supply and Ground Stop.



### TL-SB-150-KIT

Tomalok Electric Drop Bolt in Black and Stainless - 150mm with 24v Din Rail Power Supply and Ground Stop.



### TL-A-150-KIT

Tomalok Electric Drop Bolt in Anthracite Grey - 150mm with 24v Din Rail Power Supply and Ground Stop.

## Gate bolt, ground plate & power supply kits.



### TL-S-150-KIT2

Tomalok Electric Drop Bolt in Stainless - 150mm with 24v Din Rail Power Supply and Ground Plate.



### TL-B-150-KIT2

Tomalok Electric Drop Bolt in Black - 150mm with 24v Din Rail Power Supply and Ground Plate.



### TL-SB-150-KIT2

Tomalok Electric Drop Bolt in Black and Stainless - 150mm with 24v Din Rail Power Supply and Ground Plate.



### TL-A-150-KIT2

Tomalok Electric Drop Bolt in Anthracite Grey - 150mm with 24v Din Rail Power Supply and Ground Plate.

## Gate bolt units.



### TL-S-150

Tomalok Electric Drop Bolt in Stainless - 150mm.



### TL-B-150

Tomalok Electric Drop Bolt in Black - 150mm.



### TL-SB-150

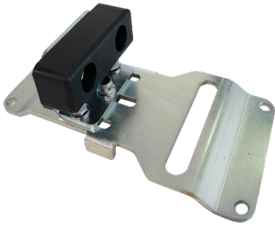
Tomalok Electric Drop Bolt in Black and Stainless - 150mm.



### TL-A-150

Tomalok Electric Drop Bolt in Anthracite Grey - 150mm.

# Tomalok



## TL-GS

Tomalok Ground Stop.



## TL-GP

Tomalok Ground Plate.



## TL-24V

Tomalok 24v Din Rail Power Supply.



## TL-KEY

Tomalok Set of Keys (2).



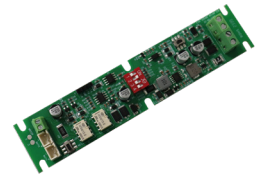
## TL-BAT

Tomalok Battery (1).



## TL-BAT-SET

Tomalok Set of Batteries (3).



## TL-PCB

Tomalok Main Control PCB.

