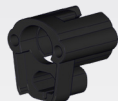


Assembly instructions KS4 PRO



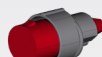
Endcap



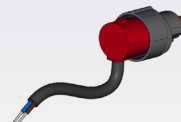
Lock cap



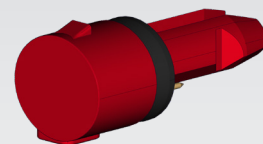
Fixation clip



Plug with resistor

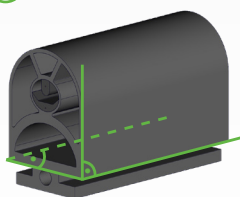
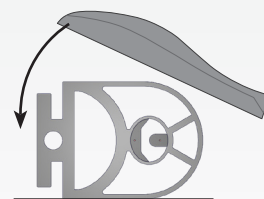
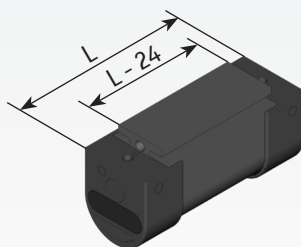


Plug with connection cable



1. Cutting the safety-contact-edge

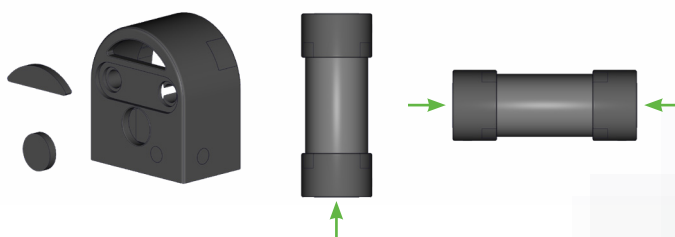
The safety-contact-profile is cut 24 mm shorter than the final length dimension to allow for the length of the end caps on each end. Make sure that the cut surfaces are rectangular and clean, so the cut should be made starting at the chamber side of the safety edge. Only Special scissors or table lever blade offered by ASO should be used for this purpose.



2. Preparing end caps

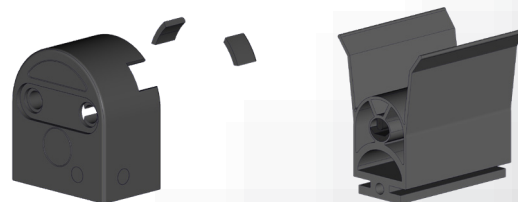
a) Water drain plugs

For installations in contact with water, it is necessary to remove both water drain plugs (semi-circle + round marks). For vertical mounting, remove the two markings in the lower end cap (nearest the floor), for horizontal mounting, remove the two markings in both end caps.



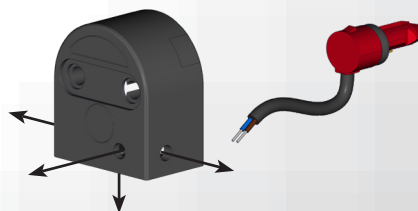
b) Notch for the sealing lip

When assembling safety-contact-edges with sealing lips, the end caps have to be notched where indicated to allow for the sealing lip(s).



c) Connection cable

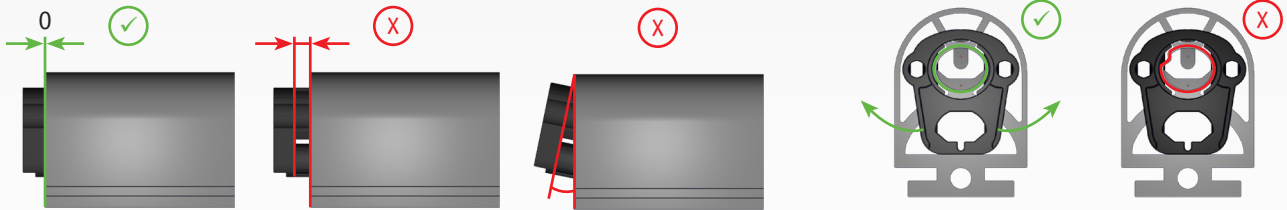
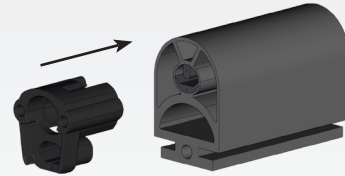
Choose desired cable exit of end cap. If necessary, push through the marks with a small screwdriver or tool.



Assembly instructions KS4 PRO

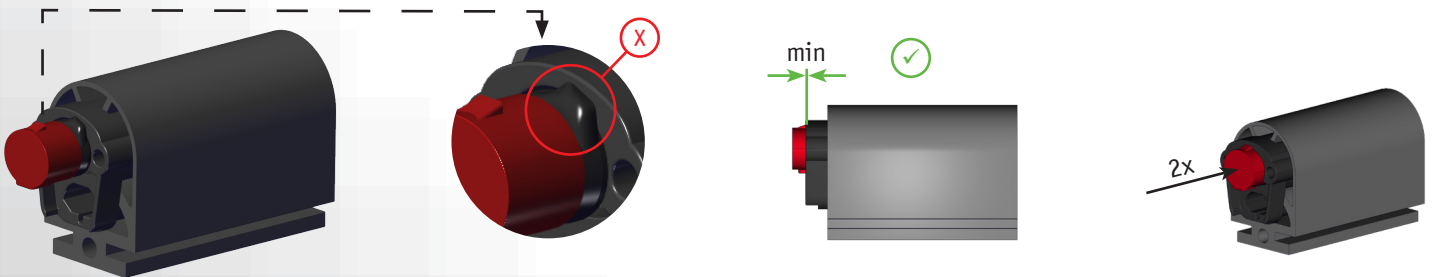
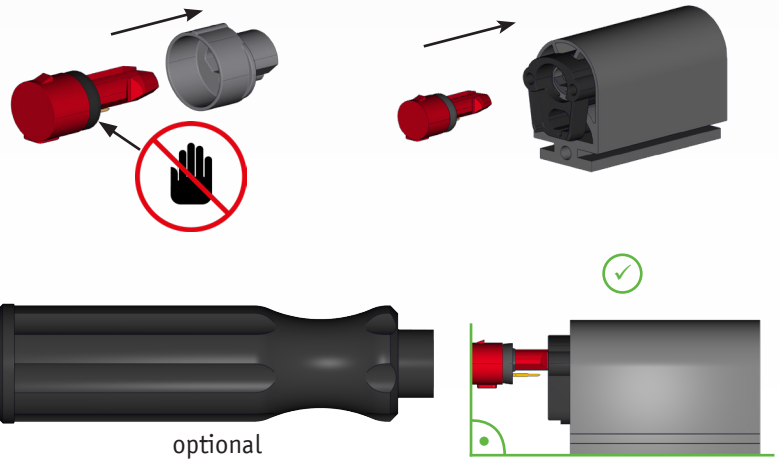
3. Insert lock cap

Push the lock cap straight into the hollow chambers around the internal switching chamber until it is tightly against the cut surface of the profile. Then check whether the outer wall of the switching chamber snags the lock cap. Slight rotational movements of the lock cap can additionally cause this. For the required sealing, the switching chamber must not distort.



4. Insert the contact plug

Remove the plug from its protective cap, making sure not to touch the black sealing compound. Insert the plug by pushing it in straight aligned so that the self-adhesive sealant does not touch or stick to the lock cap. Make sure the attachment point of the plug is as close to the lock cap as possible. Then press in the plug a second time. Optionally, an assembly aid available from ASO can be used.

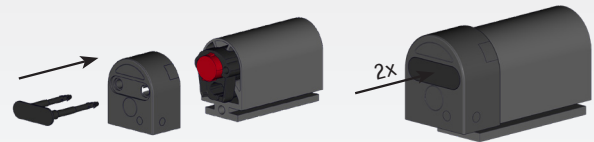


Assembly instructions KS4 PRO

DOC0000292 rev 00
as of 19.04.2021
Technical changes reserved

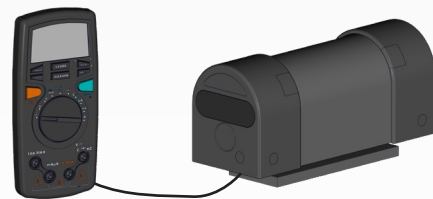
5. Put on end caps

Push the end cap onto the safety edge and fix it with the clip(s) until it rests in the predetermined position of the end cap and noticeably locks "Clicks" in the lock cap. Then press the fixation clip a second time. For bigger safety edges, the end cap is fixed in the profile bottom by an additional fixing clip.



6. Electrical testing of the safety contact edge

After assembly on both ends measure the contact edge with an ohmmeter. In rest position, the resistance value has to be $8,2 \text{ k}\Omega \pm 500 \Omega$. When edge is activated, the resistance should not exceed 500Ω .



Safety contact edges may only be assembled and installed by authorized personnel!
ASO GmbH excludes all liability for damage caused of an incorrect assembly and installation of the contact edges!